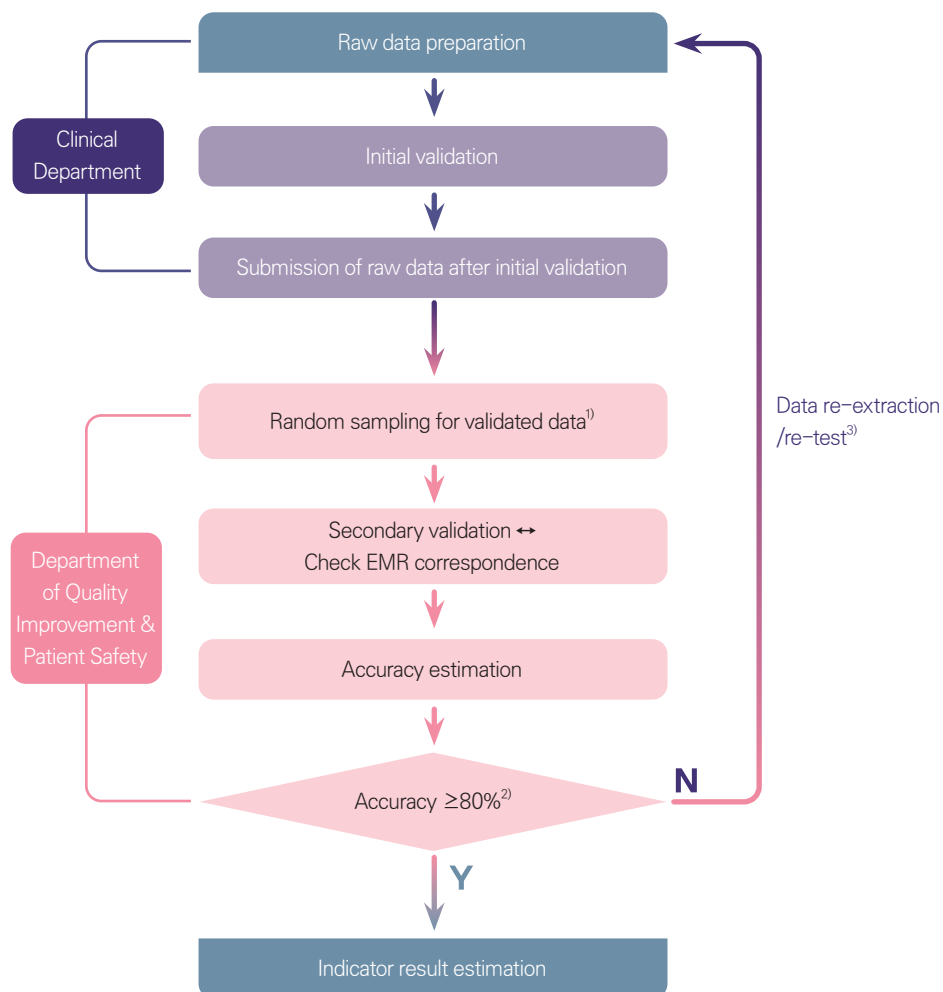


Data Validation Procedure and Standards



- * Random sampling: Data extraction at random
- * Raw data: The source data prior to any processing
- * EMR: Electronic Medical Record

1) Sample Size Requirements: JCI LOM version 2.0

Initial Patient Population "N"	Minimum Required Sample Size
1 – 16	No sampling; 100% of the Initial Patient Population is required
17 – 160	16
161 – 480	10% of the Initial Patient Population (max. 48cases)
481 ≤	48

2) Only the measures exhibiting data accuracy $\geq 80\%$ are compiled into the list

3) If the result of secondary validation shows accuracy $< 80\%$, data re-extraction re-test may be performed to the entire raw data